

# PRO-DIG™

Reliability Under Pressure

## GLOBAL MANUFACTURING

PRO-DIG manufactures its products in state of the art facilities in both the USA and the UK. We employ the latest techniques and manufacturing technologies including CNC machining centers, Plasma Profiling, CNC Gear Shaping, and fabrication of all products.

### TRADEMARKS



### MEMBERS & AFFILIATIONS



## CONTACT

785 • 856 • 2661 WWW.PRO-DIG-USA.COM

1604 ROSEPORT RD • ELWOOD, KS 66024



# Intelli-Tork®

Cloud Based Torque Monitor

PROUDLY MADE IN

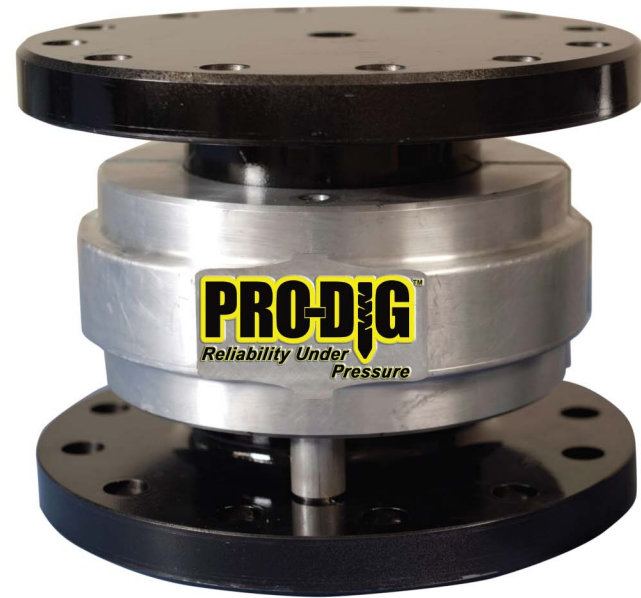


## DRILLING ATTACHMENTS & FOUNDATION TOOLING

(785) • 856 • 2661

WWW.PRO-DIG-USA.COM





## **BENEFITS**

**State of the art calibration services are traceable to NIST Standards**

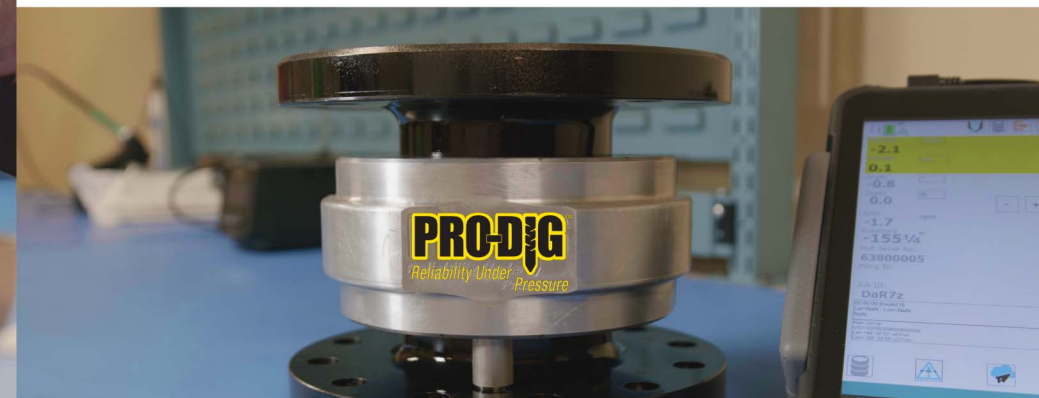
**Real-time screenshare for remote support  
Multiple device can view real-time display & logging functions**

**Can be used both in cab & out**

**Cross fleet flexibility, can be used with any manufacturers drive heads or drilling equipment**

**Can be used in a wide range of drilling applications including helical pile installation & CFA (Cast In Place)**

**Standard & custom reports available with cloud storage**



**100% Designed, Machined & Assembled In-House**

**State Of The Art Wi-Fi & Wireless Technology**

**Highly Accurate Torque Monitoring Capabilities**

**No Changing Batteries Done With Yearly Calibrations**

**Automatic Cloud Data Transfer & Storage**

**Any Direction Angle & Depth Monitoring**

**Extremely Rugged Design**

**300 Feet Communication Range**

**USB Download**

**Wireless Hotspot**

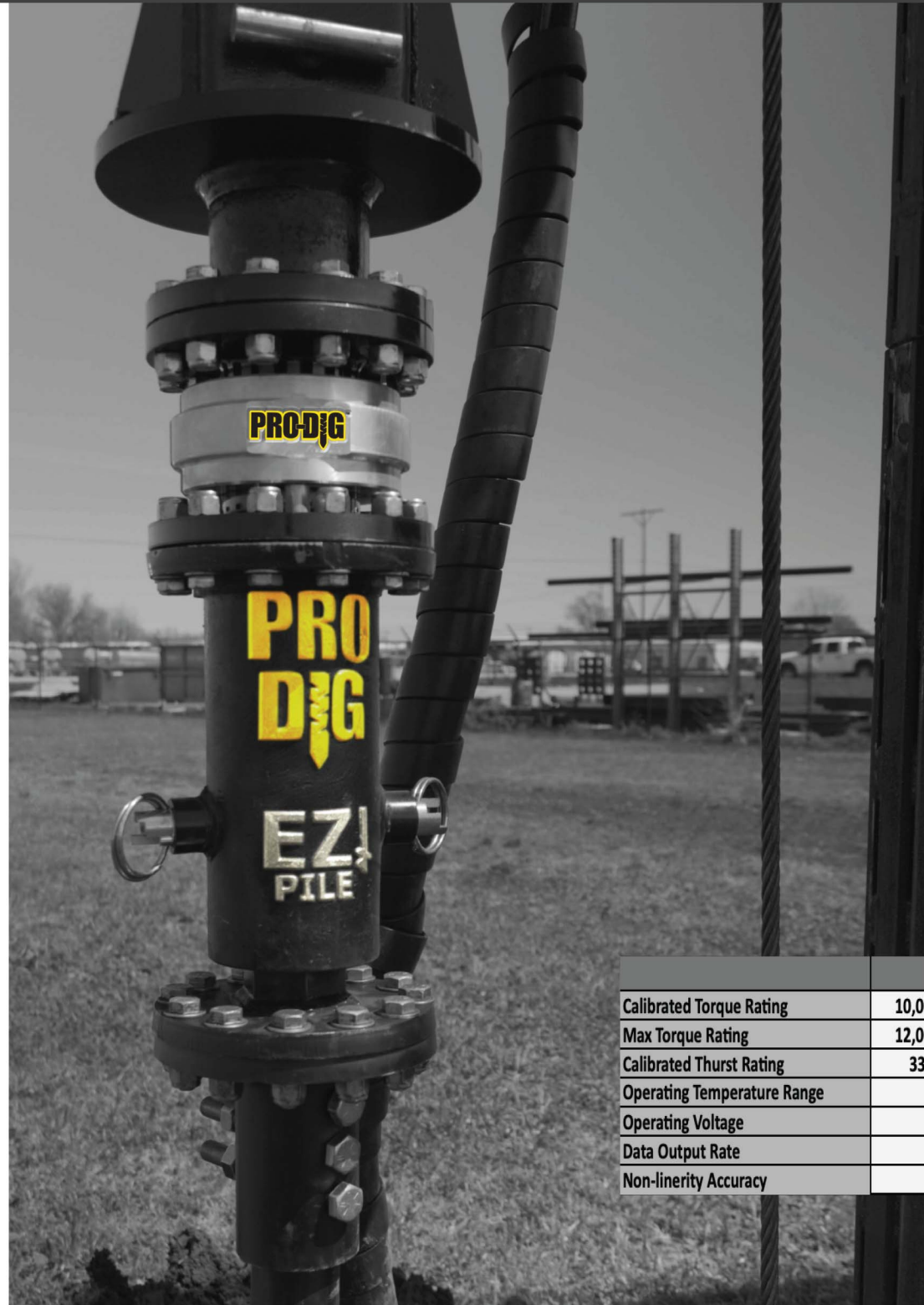
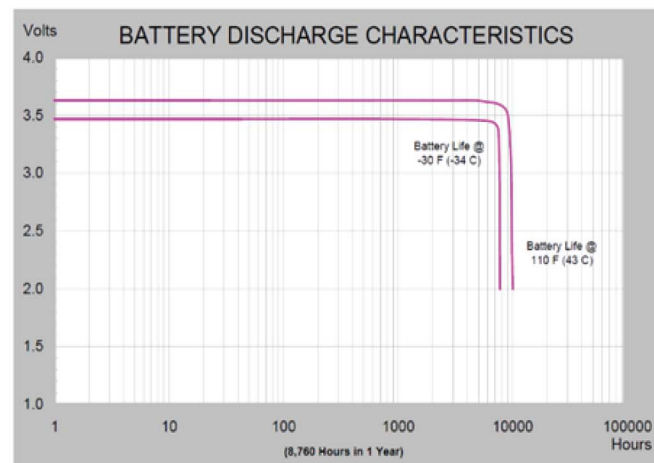
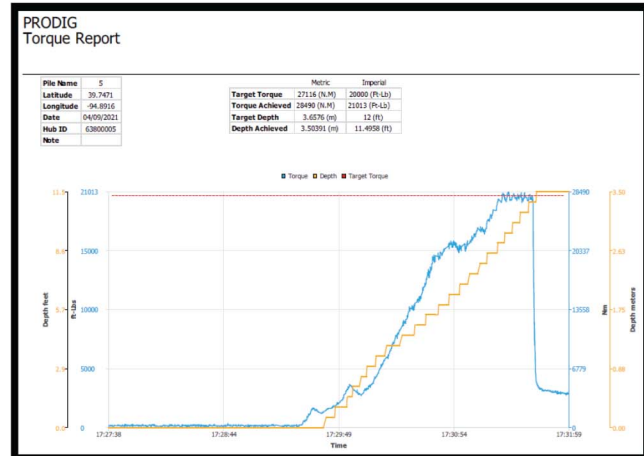
**Cellular Network Data Transfer Available**

## **QUALITY YOU CAN TRUST**

NOW MANUFACTURED IN OUR STATE OF THE ART FACILITY

**Designed • Assembled • Serviced • Machined • Calibrated**

**“A Quantum Leap In Precise Torque & Angle Data Measurement”**



## FEATURES



- Accurate Torque Monitoring (+/-0.3%)
- Accurate Angle Measurement (+/-0.5d)
- Axial Load Measurement
- Shaft RPM Measurement
- GPS Location
- Simple To Use Logging Functions
- Torque Alarm / Alert Function

	H200	H300	S400	S1250	S2500	S4000	Units
Calibrated Torque Rating	10,000 (13,558)	25,000 (33,895)	60,000 (81,349)	125,000 (169,477)	250,000 (338,955)	400,000 (542,327)	lb. ft (Nm)
Max Torque Rating	12,000 (16,270)	32,000 (43,386)	67,000 (90,840)	140,000 (189,815)	265,000 (359,292)	415,000 (562,664)	lb. ft (Nm)
Calibrated Thrust Rating	33 (14,969)	33 (14,969)	33 (14,969)	33 (14,969)	33 (14,969)	33 (14,969)	klbf (kgf)
Operating Temperature Range	-20 (-29) to 120 (49)						°F (°C)
Operating Voltage	3.6						V
Data Output Rate	10						SPS
Non-linearity Accuracy	0.025						%

## Pro-Dig "Reliability Under Pressure"

ProDig is an established manufacturer of high-quality drilling and piling equipment. Our range of products includes Hydraulic Anchor Driveheads, Foundation Tooling, Excavator Drilling and Piling Masts Custom Excavator and Skidsteer Attachments, Custom Tooling and Torque Measurement Equipment.

## INTELLI-TORK

World leaders and innovators in torque measurement systems deployed in the Screw Pile installation process. For over 10 years the Intelli-Tork has revolutionized accurate display and logging of torque. The system is totally wireless and uses the latest in cloud technology and reporting.

**REPORT INCLUDES**

- Coversheet & Individual Pile Logs
- Individualize Your Log Reports With Company Name & Logo
- Standard & Customized Reporting
- Available With Cloud Service



PRODIG  
Torque Report

Job: PRODIG

This report covers the following piles:

File ID	HUB ID	Date Drilled	Target Torque (lb-ft)	Target Torque (Nm)	Torque Achieved	Page
1	63800005	04/09/2021	20000	27116	107%	2
2	63800005	04/09/2021	20000	27116	110%	3
3	63800005	04/09/2021	20000	27116	103%	4
5	63800005	04/09/2021	20000	27116	105%	5

This report was generated from the following datafiles:

File ID	File Name
1	...2021-04-09_16-58-58_V01_RID#63800005_JID#PRODIG_PID#1.csv
1	...2021-04-09_17-00-07_V01_RID#63800005_JID#PRODIG_PID#1.csv
2	...2021-04-09_17-08-43_V01_RID#63800005_JID#PRODIG_PID#2.csv
3	...2021-04-09_17-13-18_V01_RID#63800005_JID#PRODIG_PID#3.csv
5	...2021-04-09_17-27-38_V01_RID#63800005_JID#PRODIG_PID#5.csv



**Pro-Dig "Reliability Under Pressure"**

ProDig is an established manufacturer of high-quality drilling and piling equipment. Our range of products includes Hydraulic Anchor Driveheads, Foundation Tooling, Excavator Drilling and Piling Masts Custom Excavator and Skidsteer Attachments, Custom Tooling and Torque Measurement Equipment.

**The Pro-Dig Difference**

World leaders and innovators in torque measurement systems deployed in the Screw Pile installations process. 100% Designed, Machined, Assembled, Calibrated and Services "In-House". No changing batteries till yearly calibration. Pro-Dig Intelli-Torks are often imitated... but NEVER duplicated.